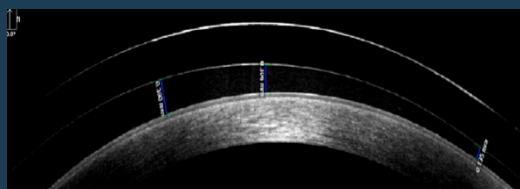


Our Mission Statement

The Scleral Lens Education Society (SLS) teaches contact lens practitioners the science and art of prescribing scleral lenses. The SLS supports public education that highlights the benefits and availability of scleral lenses.



Fellowship Application:

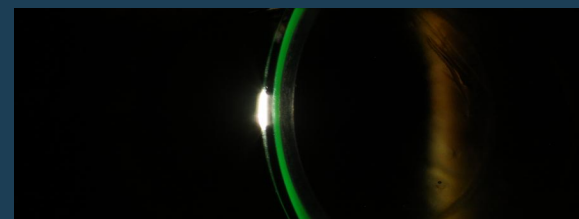
Please email your intent to pursue fellowship, your plan to achieve 60 points, as well as all submissions to the Fellowship Chair:

SLSfellowship@gmail.com

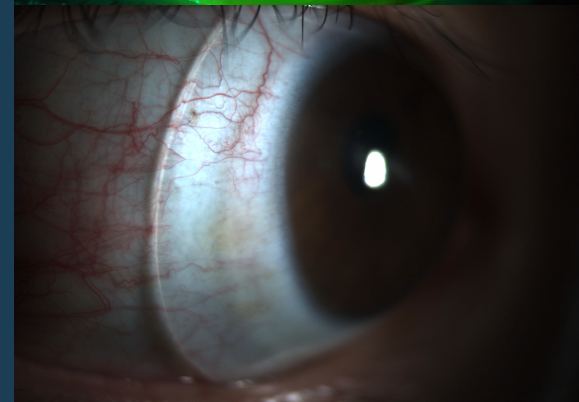
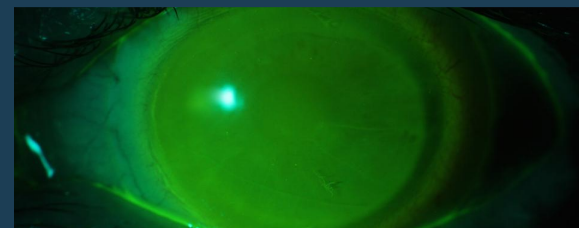
SLS Membership:

For more information and to become a member of the SLS, please visit our website:

www.sclerallens.org



Become a Fellow



Fellowship Requirements

Optometrists, ophthalmologists, and Fellows of the Contact Lens Society of America (FCLSA) who have proven themselves in the field of scleral lenses can apply.

Candidates must pay an application fee and take no more than three years from the date of application to complete the Fellowship process.

The candidate must obtain a total of 60 points. 20 of the 60 points must be from case report submissions. The remaining 40 points can be obtained from any combination of the items on the point table.

Candidates may resubmit revised reports only two times. After the second submission, if the report is still not deemed satisfactory the candidate will need to submit a different report.

Fellowship Point Table

Submission Item	Points
Completion of a Cornea & Contact Lens Residency or Fellowship certified by the Accreditation Council on Optometric Education (ACOE)	20
Diplomate of the Cornea, Contact Lens, and Refractive Technologies Section of the American Academy of Optometry	10
Standard Case Report <ul style="list-style-type: none"> Will be reviewed by Fellowship Committee 	20
Peer Reviewed Journal Article <ul style="list-style-type: none"> Candidate must be first author 	20
Peer Reviewed Lecture <ul style="list-style-type: none"> Acceptable only if presented at a major meeting and/or is COPE approved Lecture must be a standard 1 credit hour or longer Please submit a PDF copy of the lecture slides and provide COPE ID if applicable The primary topic of the lecture should be scleral lenses 	20
Peer Reviewed Poster or Abstract <ul style="list-style-type: none"> Candidate must be first author 	10
Non-Peer Reviewed Article <ul style="list-style-type: none"> Examples include articles in editor reviewed publications, such as Contact Lens Spectrum, Review of Cornea & Contact Lenses, or Review of Optometry Will be reviewed by the Fellowship Committee 	10
Scleral Lens Multiple Choice Quiz <ul style="list-style-type: none"> The link to the multiple choice quiz is available on the website Candidates may take the quiz 3 times Points will be awarded once the candidate passes 	10

Standard Case Report Guidelines

Should include the following:

- Cover page
- Introduction
- Accounts of first visit and all follow-up visits
- Contact lens examination, fit evaluation, and any troubleshooting process
- At least 3 months of wear
- Topographies, photos, and any auxiliary testing
- Any referrals to another practitioner
- Differential Diagnosis
- Discussion
- Conclusion
- References

To view a completed report and for more details please visit:

www.sclerallens.org/become-fellow